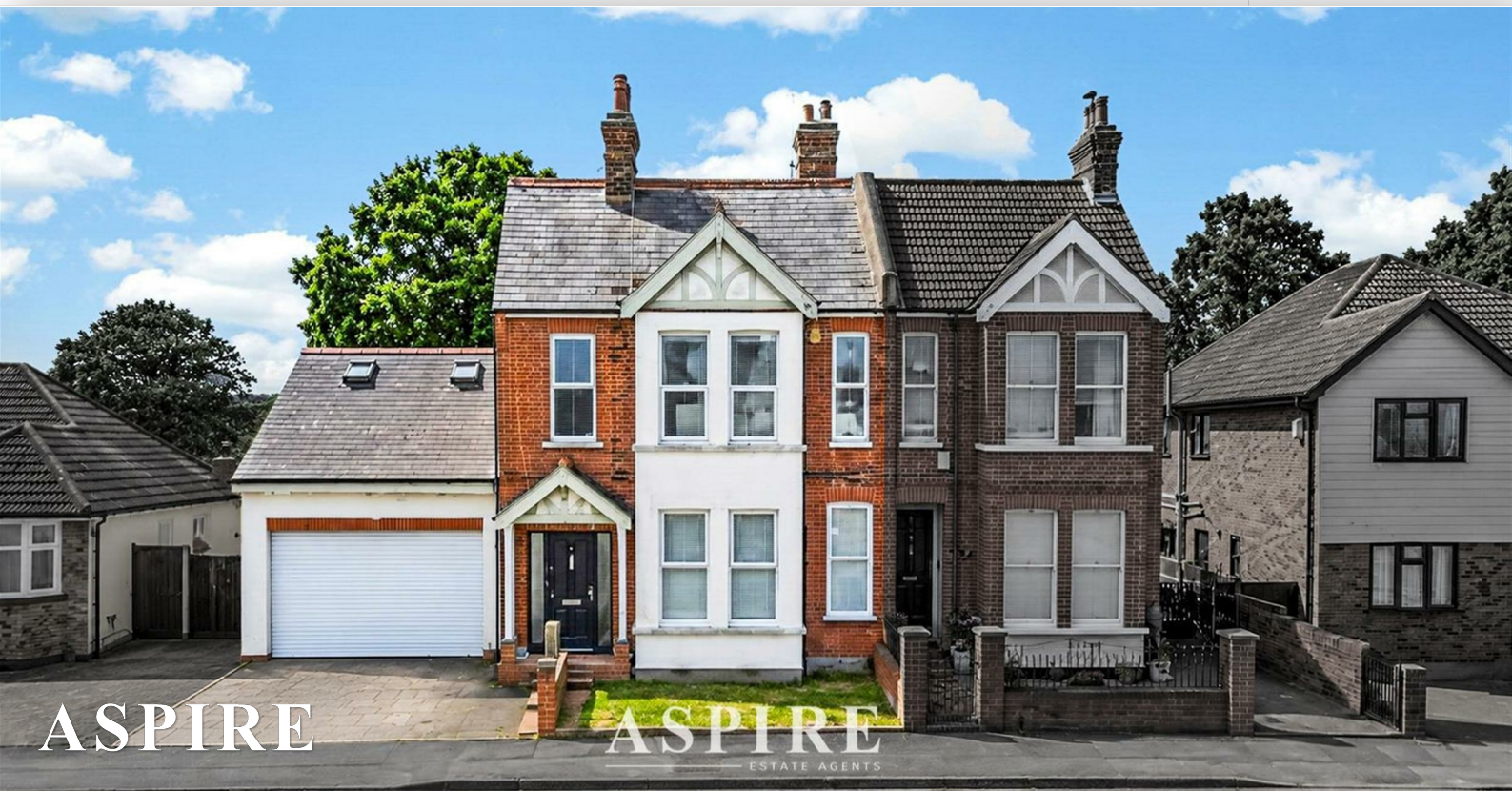


To arrange a viewing contact us
today on 01268 777400



Gladstone Road, Hockley Guide price £550,000

Situated in the heart of Hockley, just a short walk from the railway station, local shops and well-regarded schools, this stunning extended bay-fronted Victorian style family home offers spacious and versatile accommodation throughout.

Beautifully presented and full of character, the home combines period charm with modern finishes, creating an ideal family home in a highly convenient location. The property offers four bedrooms, a stylish lounge with feature bay window, a spacious sitting room with access to the rear garden, a well-equipped kitchen and a useful inner hall/study area.

The first floor offers generously sized bedrooms, including a beautiful main bedroom with a large luxury en-suite bathroom. There is also a separate modern shower room, both finished to an impressive standard.

To the front of the home, there is a driveway providing off-street parking for several vehicles, leading to an attached double garage. Above the garage is a large loft room, offering excellent potential to convert into attached annexe accommodation, subject to the usual planning consents.

Externally, the property benefits from a generous rear garden with decking areas and lawn, creating a fantastic space for families and entertaining.

Being offered with no onward chain, this rarely available family home must be viewed to fully appreciate the space, character and potential on offer.

www.aspireestateagents.co.uk

<p>Accommodation Entrance Hall</p>	<p>WC, wood-effect flooring and an obscure glazed window.</p>
<p>Accessed via a hardwood glazed entrance door, the spacious entrance hall features tiled flooring, coving to the ceiling and double French doors opening into the main living area.</p>	<p>Loft Room (Above Garage) 17'2" x 16'2" (5.23m x 4.93m)</p>
<p>Sitting Room 21'6" x 15'7" (6.55m x 4.75m)</p>	<p>An impressive additional room with Velux windows to the front, a rear window and radiator. Offering excellent potential for conversion into an annexe, studio or home office, subject to the necessary consents.</p>
<p>A superb open-plan reception room with French doors and full-height glazed side panels opening onto the rear garden. Features include original parquet flooring, a contemporary vertical radiator, picture rail, coving, a large understairs storage cupboard and stairs rising to the first floor. A door leads through to the inner hall/study.</p>	<p>First Floor Landing Featuring original wood flooring, bespoke book shelving and a contemporary vertical radiator.</p>
<p>Lounge 15'6" x 11'9" (4.72m x 3.58m)</p>	<p>Principal Bedroom 15'3" x 9'8" (4.65m x 2.95m)</p>
<p>A beautiful bay-fronted reception room with feature fireplace and decorative alcoves. Finished with wood flooring, picture rail, coving and a contemporary radiator, creating an elegant and welcoming living space.</p>	<p>A spacious bay-fronted principal bedroom with picture rail, contemporary vertical radiator and direct access to the luxurious en-suite.</p>
<p>Kitchen 16'10" x 9'10" (5.13m x 3.00m)</p>	<p>Luxury En-Suite 20'8" x 6'0" (6.30m x 1.83m)</p>
<p>Fitted with an extensive range of base and eye-level units complemented by roll-edge work surfaces and an inset one-and-a-half bowl sink. There is space and plumbing for appliances together with room for a freestanding Range cooker beneath a stainless steel extractor hood. Additional features include a charming brick-built fireplace, inset ceiling spotlights, tiled flooring and direct access to the rear garden.</p>	<p>An exceptional, spa-inspired bathroom featuring a freestanding bath positioned on a raised platform with matt black wall-mounted taps and shower attachment. The suite also includes a wall-hung vanity wash basin, Japanese smart WC, period-style heated towel radiator, feature marble walls, inset LED lighting and contemporary tiled flooring.</p>
<p>Inner Hall / Study 8'7" x 8'3" (2.62m x 2.51m)</p>	<p>Bedroom Two 9'6" x 9'5" (2.90m x 2.87m)</p>
<p>A versatile space ideal as a home office or study, with access to the garage, staircase to the loft room above and a door to the ground floor cloakroom.</p>	<p>A comfortable double bedroom overlooking the rear garden with built-in wardrobe, picture rail and contemporary radiator.</p>
<p>Ground Floor Cloakroom Fitted with a pedestal wash hand basin, close-coupled</p>	<p>Bedroom Three 10'11" x 9'10" (3.33m x 3.00m)</p>
	<p>A further double bedroom featuring an original fireplace, airing cupboard and picture rail.</p>
	<p>Family Shower Room</p>

Beautifully appointed with a corner shower enclosure, vanity wash basin, Japanese smart WC, chrome heated towel rail, marble-effect wall panelling and inset ceiling spotlights.

Exterior

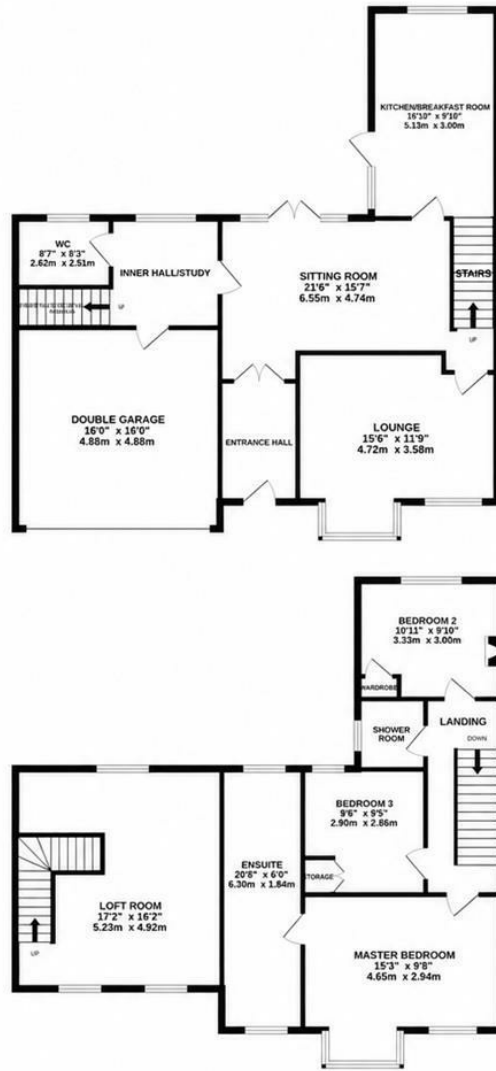
The rear garden extends to approximately 65ft, commencing with a generous decked entertaining area leading onto a well-maintained lawn. A second decked seating area is positioned at the rear of the garden, with gated side access to the front of the property.

To the front, a private driveway provides off-street parking for several vehicles and leads to the attached double garage.

Attached Double Garage

16'0" x 16'0" (4.88m x 4.88m)

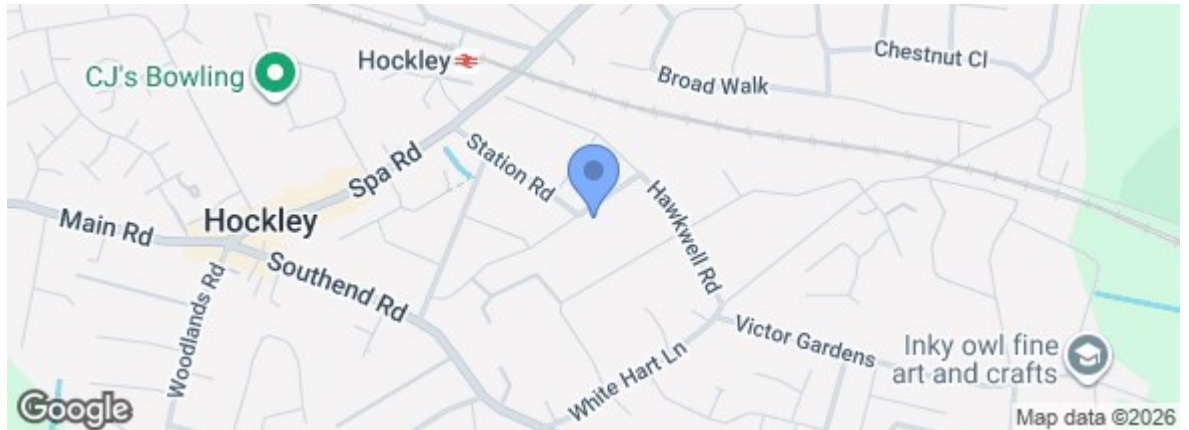
Fitted with an electric roller door, power and lighting, together with internal access to the study/inner hall.



TOTAL FLOOR AREA : 1880 sq.ft. (174.7 sq.m.) approx.

Whilst every attempt has been made to ensure the accuracy of the floorplan contained here, measurements of doors, windows, rooms and any other items are approximate and no responsibility is taken for any error, omission or mis-statement. This plan is for illustrative purposes only and should be used as such by any prospective purchaser. The services, systems and appliances shown have not been tested and no guarantee as to their operability or efficiency can be given.
Made with Metropix ©2026

Energy Efficiency Rating		Current	Potential
Very energy efficient - lower running costs			
(92 plus)	A		
(81-91)	B		
(69-80)	C		
(55-68)	D		
(39-54)	E		
(21-38)	F		
(1-20)	G		
Not energy efficient - higher running costs			
England & Wales		EU Directive 2002/91/EC	
Environmental Impact (CO ₂) Rating			
Very environmentally friendly - lower CO ₂ emissions			
(02 plus)	A		
(81-91)	B		
(69-80)	C		
(55-68)	D		
(39-54)	E		
(21-38)	F		
(1-20)	G		
Not environmentally friendly - higher CO ₂ emissions			
England & Wales		EU Directive 2002/91/EC	



Under the Property Misdescriptions Act 1991 we make every effort to ensure our sales details are accurate but they are a general outline and do not constitute any part of an offer or contract. Any services, equipment and fittings have not been tested and no warranty can be given as to their condition. We strongly recommend that all the information provided be verified by your advisors and in particular, measurements required for a specific purpose such as fitted furniture or carpets. Please tell us if you have any problems and members of our branches will help either over the phone or in person. A copy of our complaints procedure is available on request. The details are issued on the strict understanding that any negotiations in respect of the property named herein are conducted through Aspire Estate Agents.